

---

# Mangere Bridge School

---

## Pānui

---

Issue No. 1 | February 2022

---



Room 1 tamariki showing their beautiful smiles because they love being at school!

---

## Important Dates

### Board Hui

- Wk 5 - Thursday, March 3

### Rippa Zones

- Wk 7 - Tuesday, March 15t  
(selected Y 5/6 students)

### Softball Zones

- Wk 8 - Tuesday, March 29  
(selected Y 5/6 students)

### Teacher Only Day

- Wk 9 - Friday, April 1

### Board Hui

- Wk 10 - Thursday, April 7

### Fun Run

- Wk 10 - Friday, April 8 - TBC

### Easter/Term 1 Holiday

- Friday, April 15 - Sunday, May 1

## Term 2

**Talanoa Goal Setting** - Wk 1 - May 3 & 5

## Principal/Tumuaki Message

Teena Koutou Katoa, Talofa lava, Malo e lelei, Fakaalofa lahi atu, Kia Orana, Bula Vinaka, Toloha ni, Ni Hao, Namaste!

We are now at the end of Week 4 and it is great to see our tamariki at school and enjoying their learning with their peers and their classroom teacher. We are also excited about our new student inquiry theme for Term 1 which is 'Kuneroa ki tea o hiaroa' 'Be the change that you wish to see'. Our tamariki will develop new knowledge about change, how we can use manaakitanga to support change and how are we responding to change.

We understand the last two weeks have been challenging for some of our whaanau and staff affected by Covid. Although this has caused a disruption with an increase of students and teachers who are away sick or isolating, I am very proud of the way our staff have continued to manage the changes and accommodate especially with the pressure of the Omicron spread.

Our aim is for our tamariki to return to school as we believe this is the best place for them to be where they will be learning and thriving in a fun, enjoyable and vibrant environment. I am very proud to be part of such an amazing school and supportive community. I look forward to seeing all our children return to school soon.

Naaku iti noa, naa

*Bernice Mata'utia*

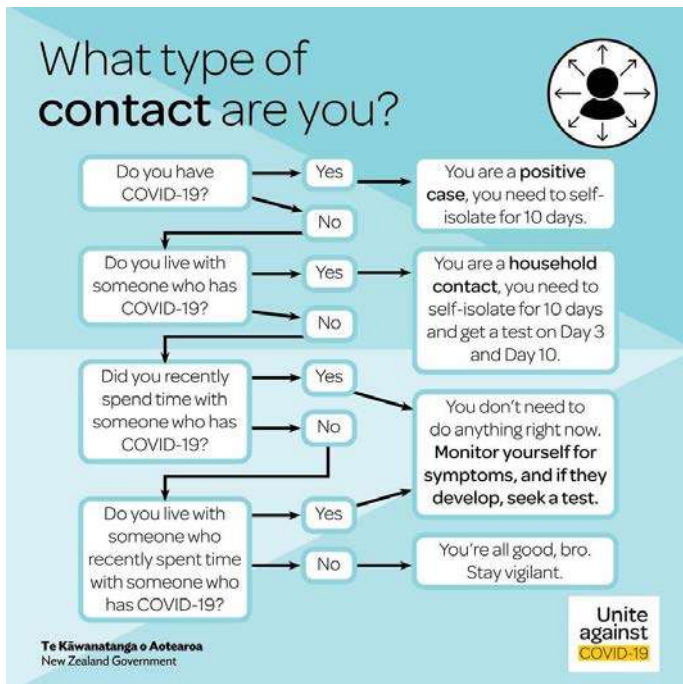
---

# COVID-19 UPDATES

## Red Light Phase 3 Changes

As of 11:59pm on Thursday 24 February, Aotearoa moved into Red Phase 3. This means there are new changes to COVID-19 contact tracing, testing and isolation requirements.

Only COVID-19 positive cases and household contacts of confirmed cases are required to self-isolate. The isolation period will be 10 days. Please notify the school office if your child develops COVID-19 or is a household contact, and let them know the isolation dates.



## Contact tracing changes for school

Since only household contacts of a case must isolate, there will be no more contact tracing or close contacts identified within a classroom setting. Because we have had COVID-19 positive students within most of our classes by now, this means we all need to:

- Continue to monitor for symptoms
- Stay home if symptomatic and get a test (a RAT - rapid antigen test is fine)
- Let the school know if it is positive

If your child received a school close contact letter this week and they are not COVID-19 positive or a household contact, they may return to school on Monday 28 February.

## Red Light Reminders

As COVID-19 spreads in our community, we have a significant number of students and also staff who are not able to come into school at this time.

Mangere Bridge School will be remaining open for as long as it is safe for us to operate with a decreased number of staff. This is a reminder that school and learning will be a little different for the next several weeks as we remain open with a reduced number of staff and students onsite.

**Unless your child has COVID-19 or is a household contact, they can come to school.**

### If your child is coming to school:

- They may have a reliever, if there is one available
- They may be put into another class
- The learning will not be "normal" - teachers will not be able to run their regular reading, writing and maths groups at this time. Teachers will be planning learning that is fun, engaging and accessible to whichever students are in their class on a particular day. It will integrate multiple curriculum areas, including reading, writing, maths and our student inquiry focus of "change"
- Your child will not have their normal homework and books will be sent home less regularly for your child to read at home

**If your child is isolating under Public Health guidance** due to being a household contact or having tested positive for COVID-19 themselves, their teacher can provide them with Seesaw tasks to complete during their isolation period. Please note, we will not be giving out school devices.

**If your child is not coming to school for other reasons** please continue to update the school office regarding the reason for their absence, this is very important.

We thank you for your understanding and patience during this challenging time. Please continue to reach out if you have any questions or concerns.

# SAFETY NOTICES

Here at MBS, we believe it is important to keep tamariki safe. Here are a few important notices for you to be aware of.

## Gates

The gates on Domain and Taylor road will be open from 8.30 am for children to enter school grounds. In the afternoon they will be open from 2.55 pm to pick up tamariki. Rooms 1-7 will be on the field for collection. Children can not play on the playground before or after school while we are in the Red traffic Light.

## Hats

The school policy says that hats must be broad-brimmed (7.5 cm), or bucket (6 cm brim, deep crown).

If children do not have a hat or the correct hat they will be required to play in the designated shaded areas.

You can purchase a school hat from the school uniform shop or a plain navy blue hat will do.



These are available from the school uniform shop for \$20.

## Masks

Children in years 4-6 are expected to bring a mask from home to wear inside the classroom.

It is important to note that cloth and medical masks should only be worn for one day before they will need to be washed. The medical masks can be washed up to 10 times, which is great for sustainability. We are finding a lot of masks lying around the school grounds. Please talk to your tamariki about how to take care of their masks. Teachers will be doing this in class as well.



## Crossings

All children are expected to use the pedestrian crossings to cross the road. As you will be aware Coronation Road has two pedestrian crossings. The bottom crossing as well as the crossings on Domain and Taylor Road are the ones that will be patrolled by a staff member during Red Light.

We are teaching the tamariki to understand that crossings are the safest place to cross. We ask that you assist us by using these when you walk your child to school.



## Bikes / Scooters

We encourage all students to walk, bike or scooter to school. Our policy around this means that tamariki whom ride MUST have a bike licence. They can pick up a declaration form from the school office. It will need to be read and signed by the child and their whaanau and then returned to the office. Your child will receive their actual licence within a week or two.

Children should remember to think about people walking on the footpaths and show them respect.





# KERERUU WHAANAU



## Whale Tales

Some of you may know about the "Whale Tale Art Trail" in Auckland and we're sure you have seen the beautiful tail in Mangere Bridge township.

Last year we dedicated ourselves to learning more about our local harbour, investigating its history and ecology, along with generating ideas of how we could protect and restore it. This led us to widen our gaze to the waters on the other side of the Taamaki Makaurau isthmus, the Waitemataa, where we learnt about the animals, food chains and the importance of marine reserves.

Kereruu whaanau (representing MBS) is thrilled to be involved in the Whale Tales project as it is another link to promote ocean conservation and highlight the wonderful Bryde's Whale, an important species needing increased protection.

The Kereruu tamariki took part in a competition to create the best design for the tail.

The winner was Keira-Laine (R16)! Rosemarie (R12) was a close second and both of the designs will be combined to make up our completed whale tail. A larger group of children will be picking up the paintbrushes and bringing their designs to life.

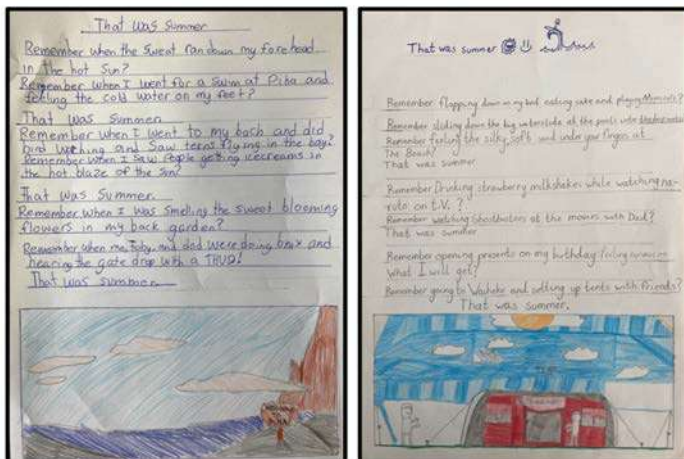


(Left) The blank canvas

(Right) Starting to take shape

## Poetry

Room 15 wrote poems based on 'change' and the 'memories of the summer holidays'.



## The First Few Weeks

Kereruu tamariki have been busy building relationships with their teachers and classmates. They have been creating classroom agreements to help with a positive class culture. Kids have been participating in team-building activities and learning the routines for 2022.

As always the beginning of the year is a great time to reintroduce our school values and expectations. Currently, we are focussing on always bringing a wide-brimmed hat to school and using our toilets respectfully.



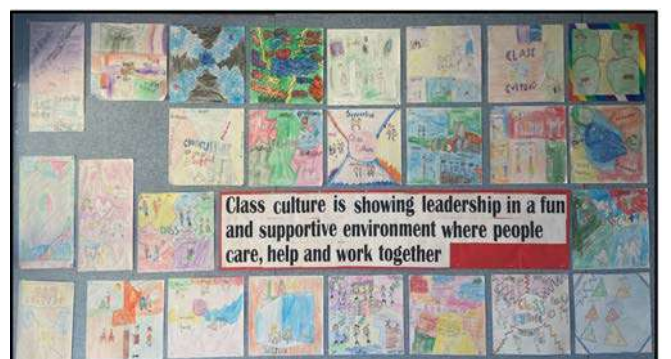
Room 15's Art Portraits



Room 13's Class Agreement



Room 12's Self-Portraits



Room 16's Class Culture Statement



# TUUI WHAANAU



## Room 7

We have been learning to build relationships, identify and demonstrate ways of maintaining and enhancing relationships between individuals and groups.

We have enjoyed getting to know each other by playing games together, then writing about ourselves and our friends.



## Room 8

We have been exploring digital art. The tamariki are having lots of fun designing and creating our own unique Whare Tapa Whaa using Minecraft Education. Check out some of our Minecraft masterpieces.



## Room 10

We have been getting to know each other more by sharing who we are, what we value and by learning our school values. Children have learnt about the importance of the Treaty of Waitangi and we created our own classroom agreement.



## Room 11

We have been focusing on learning about our Whare Tapa Whaa~Wellbeing. We started with learning about our Taha Wairua~Spiritual Wellbeing. Tamariki explored our unique identity. We enjoyed learning about who we are and creating our self-portraits!





# PIIWAIWAKA WHAANAU



## Our First Weeks at School

Piwiawaka has welcomed lots of new tamariki to our awesome team. We have started the year by getting to know each other, learning our class and school routines and making new friends.

Our tamariki know the school values, what they mean and ways they can show them. Some tamariki have been so excited to receive tamaiti miharo cards for displaying the values while playing outside.

Break times are so much fun. We have the playground to ourselves and love to run around. Eating of our kai is after the breaks and by then we are very hungry.

From our classrooms, we have been watching the builders constructing our canopy and can't wait until it is finished. We are looking forward to more shade and shelter.

Our tamariki say that learning is fun and they are proud of what they can do!

During the sunny days, we have had fun on the bikes with many tamariki learning new bike skills.



Room 4's Writing on 'Our Whaanau'

These are Room 5's self-portraits. This is the teacher's favourite artwork at the beginning of each year. We will redo these at the end of term 4, and see what changes we made throughout the year.



Ruma Rima have also been discussing how we have changed from when we were a baby to a school-age child. You can see these changes in our artwork.





# TE HIAROA WHAANAU



E ngaa mana, e ngaa reo, e ngaa maata waka o te moana nui, teenaa taatou katoa. Teenei e tuku mihi atu ki ngaa whaanau katoa i eenei o ngaa waa taumaha.

Firstly we would like to send our thoughts and love to all our whaanau during these most challenging times as we do our best to get on with 2022 and what a way to start.

We must say it was a proud moment for all of us to see our tamariki represent the school in not one but two Poowhiri. First to welcome our tumuaki, Mrs Mata'utia and then our nohinohi of the whaanau, our new students from Piiwaiwaka but also a few tamariki who have joined Tuuii and Kereru Whaanau. We hope you have had a great start to the year.

He tuku mihi ki teetahi o nga tauira i tuu maia ki te koorero moo ngaa whaanau, Jessey. Teenaa koe e te rangatira.



## He aha ngaa mahi i teenei marama

Tuu atu i nga wiki e rua kua pahure, apart from the last two weeks it has been great start to the year as our tamariki get use being in a new kura, akomanga, me oona tikanga.

In Maunga Pikitia, tamariki are enjoying the fun and exciting style of ako through play-based learning alongside Whaea Jordan and Whaea Bernie this year.

Te Ara Pueru has started to develop the fundamental skills of Te Reo Maori in a style of learning that sits well within their world, Te Ao Matihiko. Digital learning.

Te Pane o Mataoho, have been learning about the responsibilities of what it takes to be a tuakana in the whaanau. Ina te mahi, he rangatira.



This is one of our year three students creating her whaanau through coding on scratch, tau kee!

## What's coming up for Te Hiaroa?

Our focus is to carry on with our Maara and start planting to get ready for this year's big event, Matariki. We are also looking to set up our Waka, Te Ipu Kai somewhere around our school.



So if you are an expert or have a passion for either gardening or building and you would like to help our tamariki please email Matua Jordan on [jordank@mangerebridge.school.nz](mailto:jordank@mangerebridge.school.nz)

Ngaa mihi nui kia koutou katoa.

# UPDATES

## From the PTA

Teena koutou katoa e Te MBS whaanau,

We have some very exciting playground news...

The playground plans have been drawn and finalised, they incorporate ideas from our previous student inquiries a year or so ago, the deposit has been paid and we are just waiting to lock in dates for removal of the existing playground and construction of our new playground.

It is looking like by the end of May 2022 we will have OUR new playground!

Our community over the last 5 years has done so well in raising funds to go towards this project! Thank you all!! We still have a bit of money to raise however and the PTA have some awesome ideas for this. So watch this space.

Thanks everyone for your patience, good things take time and this is going to be truly unique.

We are looking for whaanau - Mums, Dads, caregivers, Nanas, Papa's etc. who want to be part of the PTA this year.

We have the position of Secretary and Co-secretary, Co-treasurer and Co-chairperson available, plus committee member roles.

Meetings are usually once per month, we have nibbles and talk about fundraising ideas etc. that we can assist the school with. The opportunity is there for you to lead an idea or to just be of assistance as required.

Have a chat to one of our existing committee and you will find out that it's not as scary or time consuming as you may think. The PTA is a great way to make friends within our school community too!

Our next meeting is Tuesday 8th March at 630pm. The venue will be either the auditorium or online via Zoom (covid pending).

Ngaa Mihi koutou,  
Victoria Piggott  
PTA Co-Chairperson  
0275554128



Term Dates 2022			
Term 1	Wednesday February 2	-	Thursday, April 14
Term 2	Monday May 2	-	Friday, July 8
Term 3	Monday July 25	-	Friday, September 30
Term 4	Monday October 17	-	Friday, December 16

## Community Notices

## Ecostore Plastic Return Programme

Thank you whaanau for keeping those empty ecostore bottles coming in. Our container is full again!

If you'd like to bring your empty bottles in, pop them in the ecostore bottle drop bin in the hallway just behind the school office. Ecostore will collect, wash and remake them into new bottles. When we collect enough bottles, our school could receive money to spend on sustainability initiatives.



Together we can reduce waste and help plastic bottles to be remade over and over again right here in New Zealand and contribute to helping solve the plastic pollution problem.

